



**ch** **APROBINAA**  
DEVOTED TO PERFECTION

GRC & GRP Manufacturing

• **WE BUILD QUALITY** •

## • ABOUT US •

A-pro Binaa, is a company formed in the year 2012 with an on field experience of more than 15 years in catering to all GRP (Glass Reinforced Plastics) and GRC (Also called GFRC - Glass Fiber Reinforced Concrete) requirements in Construction, Building Exteriors, Interiors, and Landscape Areas. We take a great pride in our crafts and our reputation for providing top quality products. We also consider customer service as our top priority. All our products are guaranteed against factory defects, and because we are local, we offer fast turnaround times on customer orders.

## WHAT IS GRC?

GRC - Glass Reinforced Concrete is popularly known as GRC or GFRC all over the world. Broadly the formulation of GRC product is a mixture of 40% Black/White Cement, 40% Fine Aggregates, 0.4% Plasticizers, 4% Polymers, 11.5% - 14% water, 3.5% - 4% of Alkali - Resistant chopped Glass Fiber and sometimes exposed aggregates for rough finishing and special designs.

GRC products are formed by a variety of manufacturing techniques. One of the most versatile is to cast the composite in molds manufactured from rubber, timber or Glassfibre Reinforced Plastic (GRP/FRP). This is known as Premix GRC. As the high - performance Alkali resistant glass fibers are evenly distributed in the mix, the material is reinforced throughout, enabling products with the finest of details to be created.

GRC is used to create beautiful architectural moldings and features. Whilst often cast with thicknesses in excess of 25 mm these products remain easy to handle and Erect, and permit the architect or engineer an unrivaled freedom for creative design.

GRC does not suffer from Corrosion of the reinforcement. Unlike traditional concrete, GRC does not require a minimum of concrete cover to the reinforcement.

## WHAT IS GRP?

GRP - Glass Reinforced Plastics, popularly known as FRP in Asia and GRP Worldwide. GRP products are made using various grades of Glass Fibers in combination with polyester or Epoxy Resins.

## Why GRC & GRP?

GRP and GRC today are making a significant contribution to the technology and aesthetics of the construction industry worldwide. These Environment friendly composites, with its low consumption of energy are being used to manufacture great varieties of products. It has won firm friends among Architects, Designers, Engineers, and end users for its flexible abilities to meet performance, appearance, and cost parameters.

## KEY FEATURES

(Applies for all GRC and GRP products)

- Can be cast into fine details.
- Can take any shape and any color.
- Offers designers unrivaled flexibility.
- Moldings and features are easy to handle and erect.
- Does not suffer from corrosion.
- Is environmentally friendly.
- Is durable against extreme weather conditions.
- Lightweight and easy to handle.
- Offers a wide variety of shapes and surface finished.
- Used as an insulation product.
- Doesn't crack or break.
- Moisture proof.
- Fire proof.
- Weather resistant.
- Durable.



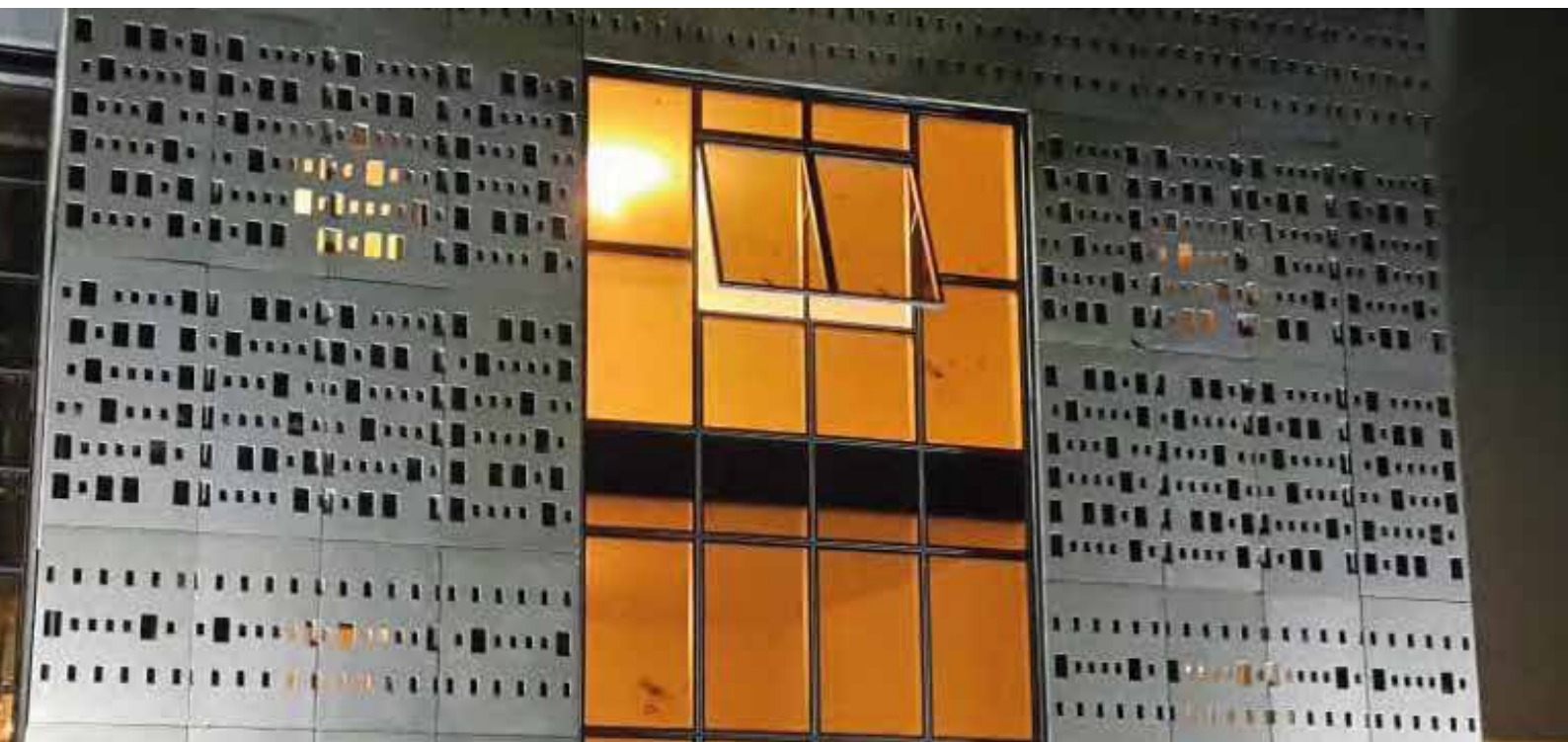
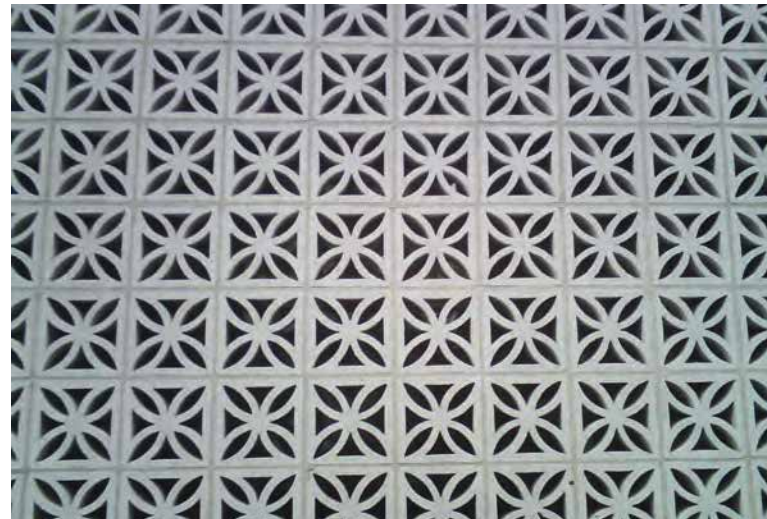


# GRC - SUNSCREENS AND CLADDING

We manufacture an exclusive range of GRC sunscreens that are available in various matchless designs and patterns. Fabricated using a special mix design of concrete (cement, silica sand and superior quality of polymers and additives) these sunscreens are high in strength, smooth in finish and heat resistant. We also offer customization as per the requirements of our clients.

## FEATURES:

- Moisture proof
- Fire proof
- Weather resistant



# • GRC - OUTDOOR FURNITURE •

## FEATURES:

- Light weight
- Any pattern needed
- Any color
- Non corrosive
- No color fading
- Heavy duty





# GRC - BALUSTERS AND ROAD SIDE BOLLARDS

We offer a wide range of GRC Balusters and Road Side Bollards in innumerable design and style options with smooth surface finish and high durability. These products can withstand heavy load and provide maximum safety. Manufactured using superior quality materials, these GRC Balusters and Road Side Bollards are conformed on various national and international standards and can also be customized as per the requirements of our customers.



# GRC - WINDOW FRAMES, COLUMNS, CAPITALS AND CORNICES

## FEATURES:

- Light weight
- Any pattern needed
- Any color
- Non corrosive
- No color fading
- Heavy duty





# • GRP - PORTABLE CABINS • (PORTA CABINS)

GRP Portable Cabins (Porta cabins) are prefabricated using GRP insulated sandwich panels installed together in a strong steel structure, with a standard size of 6m x 3m or customized. A-pro Binaa's Porta cabins are very light in weight (600kg) and prepared to be easily and quickly re-located.

Standard porta cabins feature electrical and data sockets, switches, wall lights, A/C tubes, electrical panels; all connected to an industrial input socket for fast power connection.





## • GRP - PORTABLE WC •

GRP Portable toilets are one of the traditional / conventional products which is widely used in Construction and Oil field industry due to its light weight structure, low pricing and ready availability with water and waste tanks. These come with or without tanks and have a dimension of 1.15 x 1.15 x 2.3 meters. The water tank of this portable toilet has a total capacity of 200 liters, while the waste holding tank has 200 liters capacity and could be increased a few hundreds more upon request. It also has several special features to make yourself comfortable when you are using the portable toilet such as wash basin, soap dish, tube light, exhaust fan, waterproof switch, GRP step, air vent, and an industrial outlet which also allows you to connect with external water supplies and waste outlets.



# GRP - BATH TUBS AND SHOWER TRAYS

- They are light weight - unlike other bathtubs, fiberglass bathtubs and shower trays do not require the extra effort and expense of reinforcing the bathroom floor. They are also easy to unload and carry.
- They are easy to repair – A cracked fiberglass bathtub and shower tray doesn't have to mean a replaced fiberglass bath tub. Often cracks can be repaired using a polyester resin repair kit.
- They are low cost – Molded fiberglass bathtubs and shower trays are available at a variety of price points, comparing other steel or solid surface, fiberglass bath tubs are probably the cheapest option in the market.





# GRP - CAR PARKING CANOPIES

A-pro Binaa, manufactures and installs GRP car parking canopies in a modern revolutionary design. Car canopies, school canopies and commercial canopies from domestic car ports to large industrial canopies, our trademark is your guarantee of quality.





# • GRP - PERGOLAS •

## FEATURES:

- Light weight
- Non corrosive
- Maintainance free
- Highly durable
- No lakers or sealants needed
- No color fading
- Lifetime guaranteed





# GRP - PICK UP LOW & HIGH BOOTH CABINS

Available in low or high size depending on the purpose or usage. For: police escort, surveying team, safe storage, cold rooms...



# • REPURPOSED SHIPPING CONTAINERS •









**Head Office**

Plot 900, Jahi District,  
Cadastral Zone B08, Abuja F.C.T., Nigeria

**Factory**

Mpape, Setraco Yard, Abuja F.C.T., Nigeria

**Contacts**

**Nigeria**

+234 817 555 0555

+234 805 333 3332

**Lebanon**

+961 3 832738

[aprobinaa@aprobinaa.com](mailto:aprobinaa@aprobinaa.com)

[www.aprobinaa.com](http://www.aprobinaa.com)

---

• PROUDLY MADE IN NIGERIA •